

HONLIX

HONLIX

Series 3
REV: 2024/09/01

电动自行车连接解决方案 Electric Bikes Connection Solution



公司简介

Company Profile

HONLIX

弘林科电工科技（昆山）有限公司成立于2016年，坐落于中国昆山市张浦镇德国工业园区内，工厂位于江苏昆山和河南南阳。公司专注于新能源电动自行车/滑板车/平衡车，电动摩托车，电动汽车整体连接解决方案，为客户提供一站式解决方案。

公司拥有专业的研发团队+销售团队+制造团队+品保团队，可提供整套连接器，线束组件的设计方案及选型建议，为客户提供优质的产品和快速的交期，具有良好的市场竞争力，得到广大客户的支持和信赖。

公司已经通过ISO9001:2015质量管理体系认证，IATF16949：2016正在规划中，拥有国家专利20余项，产品认证已通过ROHS REACH CE CCC等。

HONLIX Electrician Technology (Kunshan) Co., Ltd. was established in 2016 and is located in the German Industrial Park, Zhangpu Town, Kunshan City, China. The factories are located in Kunshan, Jiangsu and Nanyang, Henan. The company focuses on the overall connection solutions of new energy electric bicycles/scooters/balance vehicles, electric motorcycles, and electric vehicles, providing customers with one-stop solutions.

The company has a professional R & D team + sales team + manufacturing team + quality assurance team, can provide a complete set of connectors, wiring harness components design solutions and selection suggestions, to provide customers with high-quality products and fast delivery, with good market competition We have won the support and trust of our customers.

The company has passed ISO9001:2015 quality management system certification, IATF16949:2016 is under planning, has more than 20 national patents, and product certification has passed ROHS, REACH, CE, CCC, etc.

工厂照片
KS/HN Factory



KUN SHAN Factory



HE NAN Factory

资质证书 Company Certificate

HONLIX



Business License



Letter of Credit



Chinese/English Trademark Certificate



ISO9001:2015



CCC Certificate



ROHS Certificate



CE Certificate



More than 20 Patent Certificates in China 5



目 录一

CONTENS

| | |
|---|-------|
| A. M8 Serice Connector M8系列防水连接器 | |
| 2PIN----- | 8~9 |
| 3PIN----- | 10~11 |
| 4PIN----- | 12~13 |
| 5PIN----- | 14~15 |
| 6PIN----- | 16~17 |
| 7PIN----- | 18~19 |
| | |
| B. M10 Serice Connector M10系列防水连接器 | |
| 8PIN----- | 20~21 |
| | |
| C. Z Serice Connector Z系列连接器 | |
| 2PIN----- | 22~23 |
| | |
| D. 3+6 Serice Connector 3+6系列连接器 | |
| 3+6PIN----- | 24~25 |
| | |
| E. Flat waterproof splitter 分流器 | |
| 2 to 4----- | 26~27 |
| | |
| F. DC 5521 charger and discharger DC5521连接器 | |
| DC5521----- | 27~28 |

目 录二

CONTENS

HONLIX

| | |
|---|-------|
| G. 25A 6PIN Connector 底插连接器----- | 29~31 |
| H. 16A 3PIN BOSCH Changer 博世定制----- | 32 |
| J. 10A 5PIN Connector 智租定制----- | 33 |
| K. M8 15A 2PIN+2A 2PIN E-Bike Connector M8系列15A+2A----- | 34~35 |



HLK-301
URL Download

| | |
|---|---|
| Brand: 品牌: | HONLIX 弘林科 |
| P/N: 料号 | HLK-301 |
| MOQ: 起订量 | 500PCS/Order 500条/次 |
| Place of Origin: 产地 | Kunshan City,China 中国昆山 |
| Delivery Time: 交货周期 | 1 week 1周 |
| Export Port: 发出港口 | Shanghai 上海 |
| General features: 一般特性: | |
| Product Name 产品名称 | M8 Series M8系列 |
| Product Spec 规格型号 | 2PIN Male 公 |
| Connector locking system 互锁 | N/A |
| Ingree of protection ratings 防护等级 | IP67 |
| Ambient temperature(operation) 耐温 | -25°C~+85°C |
| Customs tariff number 海关编码 | 854422100 |
| Environmental compliance 环保等级 | RoHs, Reach |
| Electrical parameters: 电气参数: | |
| Rated voltage 电压等级 | 48V |
| Rated current(25°C) 额定工作电流 | 2A |
| Withstand voltage 耐电压 | 500V |
| Contact resistance 接触电阻 | ≤10mΩ |
| Insulation resistance 绝缘电阻 | ≥20MΩ |
| Mechanical performance: 机械参数: | |
| Mechanical life 插拔寿命 | ≤200 mating cycles |
| Insertion force 插入力 | ≤20N |
| Pull out force 拔出力 | ≥3N |
| Insertion force 配线范围 | 0.14mm ² ~0.2mm ² |
| Application Area 应用领域: | |
| Signal control and transmission of electric bicycles, balance bikes and sooter 电动自行车, 电动滑板车, 电动平衡车的信号控制与传输 | |



HLK-302
URL Download

| | |
|---|---|
| Brand: 品牌: | HONLIX 弘林科 |
| P/N: 料号 | HLK-302 |
| MOQ: 起订量 | 500PCS/Order 500条/次 |
| Place of Origin: 产地 | Kunshan City,China 中国昆山 |
| Delivery Time: 交货周期 | 1 week 1周 |
| Export Port: 发出港口 | Shanghai 上海 |
| General features: 一般特性: | |
| Product Name 产品名称 | M8 Series M8系列 |
| Product Spec 规格型号 | 2PIN Female 母 |
| Connector locking system 互锁 | N/A |
| Ingree of protection ratings 防护等级 | IP67 |
| Ambient temperature(operation) 耐温 | -25°C~+85°C |
| Customs tariff number 海关编码 | 854422100 |
| Environmental compliance 环保等级 | RoHs, Reach |
| Electrical parameters: 电气参数: | |
| Rated voltage 电压等级 | 48V |
| Rated current(25°C) 额定工作电流 | 2A |
| Withstand voltage 耐电压 | 500V |
| Contact resistance 接触电阻 | ≤10mΩ |
| Insulation resistance 绝缘电阻 | ≥20MΩ |
| Mechanical performance: 机械参数: | |
| Mechanical life 插拔寿命 | ≤200 mating cycles |
| Insertion force 插入力 | ≤20N |
| Pull out force 拔出力 | ≥3N |
| Insertion force 配线范围 | 0.14mm ² ~0.2mm ² |
| Application Area 应用领域: | |
| Signal control and transmission of electric bicycles, balance bikes and sooter 电动自行车, 电动滑板车, 电动平衡车的信号控制与传输 | |



HLK-303
URL Download

| | |
|---|---|
| Brand: 品牌: | HONLIX 弘林科 |
| P/N: 料号 | HLK-303 |
| MOQ: 起订量 | 500PCS/Order 500条/次 |
| Place of Origin: 产地 | Kunshan City,China 中国昆山 |
| Delivery Time: 交货周期 | 1 week 1周 |
| Export Port: 发出港口 | Shanghai 上海 |
| General features: 一般特性: | |
| Product Name 产品名称 | M8 Series M8系列 |
| Product Spec 规格型号 | 3PIN Male 公 |
| Connector locking system 互锁 | N/A |
| Ingree of protection ratings 防护等级 | IP67 |
| Ambient temperature(operation) 耐温 | -25°C~+85°C |
| Customs tariff number 海关编码 | 854422100 |
| Environmental compliance 环保等级 | RoHs, Reach |
| Electrical parameters: 电气参数: | |
| Rated voltage 电压等级 | 48V |
| Rated current(25°C) 额定工作电流 | 2A |
| Withstand voltage 耐电压 | 500V |
| Contact resistance 接触电阻 | ≤10mΩ |
| Insulation resistance 绝缘电阻 | ≥20MΩ |
| Mechanical performance: 机械参数: | |
| Mechanical life 插拔寿命 | ≤200 mating cycles |
| Insertion force 插入力 | ≤20N |
| Pull out force 拔出力 | ≥3N |
| Insertion force 配线范围 | 0.14mm ² ~0.2mm ² |
| Application Area 应用领域: | |
| Signal control and transmission of electric bicycles, balance bikes and sooter 电动自行车, 电动滑板车, 电动平衡车的信号控制与传输 | |



HLK-304
URL Download

| | |
|---|---|
| Brand: 品牌: | HONLIX 弘林科 |
| P/N: 料号 | HLK-304 |
| MOQ: 起订量 | 500PCS/Order 500条/次 |
| Place of Origin: 产地 | Kunshan City,China 中国昆山 |
| Delivery Time: 交货周期 | 1 week 1周 |
| Export Port: 发出港口 | Shanghai 上海 |
| General features: 一般特性: | |
| Product Name 产品名称 | M8 Series M8系列 |
| Product Spec 规格型号 | 3PIN Female 母 |
| Connector locking system 互锁 | N/A |
| Ingree of protection ratings 防护等级 | IP67 |
| Ambient temperature(operation) 耐温 | -25°C~+85°C |
| Customs tariff number 海关编码 | 854422100 |
| Environmental compliance 环保等级 | RoHs, Reach |
| Electrical parameters: 电气参数: | |
| Rated voltage 电压等级 | 48V |
| Rated current(25°C) 额定工作电流 | 2A |
| Withstand voltage 耐电压 | 500V |
| Contact resistance 接触电阻 | ≤10mΩ |
| Insulation resistance 绝缘电阻 | ≥20MΩ |
| Mechanical performance: 机械参数: | |
| Mechanical life 插拔寿命 | ≤200 mating cycles |
| Insertion force 插入力 | ≤20N |
| Pull out force 拔出力 | ≥3N |
| Insertion force 配线范围 | 0.14mm ² ~0.2mm ² |
| Application Area应用领域: | |
| Signal control and transmission of electric bicycles, balance bikes and sooter 电动自行车, 电动滑板车, 电动平衡车的信号控制与传输 | |



HLK-305
URL Download

| | |
|---|---|
| Brand: 品牌: | HONLIX 弘林科 |
| P/N: 料号 | HLK-305 |
| MOQ: 起订量 | 500PCS/Order 500条/次 |
| Place of Origin: 产地 | Kunshan City,China 中国昆山 |
| Delivery Time: 交货周期 | 1 week 1周 |
| Export Port: 发出港口 | Shanghai 上海 |
| General features: 一般特性: | |
| Product Name 产品名称 | M8 Series M8系列 |
| Product Spec 规格型号 | 4PIN Male 公 |
| Connector locking system 互锁 | N/A |
| Ingree of protection ratings 防护等级 | IP67 |
| Ambient temperature(operation) 耐温 | -25°C~+85°C |
| Customs tariff number 海关编码 | 854422100 |
| Environmental compliance 环保等级 | RoHs, Reach |
| Electrical parameters: 电气参数: | |
| Rated voltage 电压等级 | 48V |
| Rated current(25°C) 额定工作电流 | 2A |
| Withstand voltage 耐电压 | 500V |
| Contact resistance 接触电阻 | ≤10mΩ |
| Insulation resistance 绝缘电阻 | ≥20MΩ |
| Mechanical performance: 机械参数: | |
| Mechanical life 插拔寿命 | ≤200 mating cycles |
| Insertion force 插入力 | ≤20N |
| Pull out force 拔出力 | ≥3N |
| Insertion force 配线范围 | 0.14mm ² ~0.2mm ² |
| Application Area 应用领域: | |
| Signal control and transmission of electric bicycles, balance bikes and sooter 电动自行车, 电动滑板车, 电动平衡车的信号控制与传输 | |



HLK-306
URL Download

| | |
|---|---|
| Brand: 品牌: | HONLIX 弘林科 |
| P/N: 料号 | HLK-306 |
| MOQ: 起订量 | 500PCS/Order 500条/次 |
| Place of Origin: 产地 | Kunshan City,China 中国昆山 |
| Delivery Time: 交货周期 | 1 week 1周 |
| Export Port: 发出港口 | Shanghai 上海 |
| General features: 一般特性: | |
| Product Name 产品名称 | M8 Series M8系列 |
| Product Spec 规格型号 | 4PIN Female 母 |
| Connector locking system 互锁 | N/A |
| Ingree of protection ratings 防护等级 | IP67 |
| Ambient temperature(operation) 耐温 | -25°C~+85°C |
| Customs tariff number 海关编码 | 854422100 |
| Environmental compliance 环保等级 | RoHs, Reach |
| Electrical parameters: 电气参数: | |
| Rated voltage 电压等级 | 48V |
| Rated current(25°C) 额定工作电流 | 2A |
| Withstand voltage 耐电压 | 500V |
| Contact resistance 接触电阻 | ≤10mΩ |
| Insulation resistance 绝缘电阻 | ≥20MΩ |
| Mechanical performance: 机械参数: | |
| Mechanical life 插拔寿命 | ≤200 mating cycles |
| Insertion force 插入力 | ≤20N |
| Pull out force 拔出力 | ≥3N |
| Insertion force 配线范围 | 0.14mm ² ~0.2mm ² |
| Application Area应用领域: | |
| Signal control and transmission of electric bicycles, balance bikes and sooter 电动自行车, 电动滑板车, 电动平衡车的信号控制与传输 | |



HLK-307

[URL Download](#)

| | |
|---|---|
| Brand: 品牌: | HONLIX 弘林科 |
| P/N: 料号 | HLK-307 |
| MOQ: 起订量 | 500PCS/Order 500条/次 |
| Place of Origin: 产地 | Kunshan City,China 中国昆山 |
| Delivery Time: 交货周期 | 1 week 1周 |
| Export Port: 发出港口 | Shanghai 上海 |
| General features: 一般特性: | |
| Product Name 产品名称 | M8 Series M8系列 |
| Product Spec 规格型号 | 5PIN Male 公 |
| Connector locking system 互锁 | N/A |
| Ingree of protection ratings 防护等级 | IP67 |
| Ambient temperature(operation) 耐温 | -25°C~+85°C |
| Customs tariff number 海关编码 | 854422100 |
| Environmental compliance 环保等级 | RoHs, Reach |
| Electrical parameters: 电气参数: | |
| Rated voltage 电压等级 | 48V |
| Rated current(25°C) 额定工作电流 | 2A |
| Withstand voltage 耐电压 | 500V |
| Contact resistance 接触电阻 | ≤10mΩ |
| Insulation resistance 绝缘电阻 | ≥20MΩ |
| Mechanical performance: 机械参数: | |
| Mechanical life 插拔寿命 | ≤200 mating cycles |
| Insertion force 插入力 | ≤20N |
| Pull out force 拔出力 | ≥3N |
| Insertion force 配线范围 | 0.14mm ² ~0.2mm ² |
| Application Area 应用领域: | |
| Signal control and transmission of electric bicycles, balance bikes and sooter 电动自行车, 电动滑板车, 电动平衡车的信号控制与传输 | |



HLK-308

[URL Download](#)

| | |
|---|---|
| Brand: 品牌: | HONLIX 弘林科 |
| P/N: 料号 | HLK-308 |
| MOQ: 起订量 | 500PCS/Order 500条/次 |
| Place of Origin: 产地 | Kunshan City,China 中国昆山 |
| Delivery Time: 交货周期 | 1 week 1周 |
| Export Port: 发出港口 | Shanghai 上海 |
| General features: 一般特性: | |
| Product Name 产品名称 | M8 Series M8系列 |
| Product Spec 规格型号 | 5PIN Female 母 |
| Connector locking system 互锁 | N/A |
| Ingree of protection ratings 防护等级 | IP67 |
| Ambient temperature(operation) 耐温 | -25°C~+85°C |
| Customs tariff number 海关编码 | 854422100 |
| Environmental compliance 环保等级 | RoHs, Reach |
| Electrical parameters: 电气参数: | |
| Rated voltage 电压等级 | 48V |
| Rated current(25°C) 额定工作电流 | 2A |
| Withstand voltage 耐电压 | 500V |
| Contact resistance 接触电阻 | ≤10mΩ |
| Insulation resistance 绝缘电阻 | ≥20MΩ |
| Mechanical performance: 机械参数: | |
| Mechanical life 插拔寿命 | ≤200 mating cycles |
| Insertion force 插入力 | ≤20N |
| Pull out force 拔出力 | ≥3N |
| Insertion force 配线范围 | 0.14mm ² ~0.2mm ² |
| Application Area 应用领域: | |
| Signal control and transmission of electric bicycles, balance bikes and sooter 电动自行车, 电动滑板车, 电动平衡车的信号控制与传输 | |



HLK-309
URL Download

| | |
|---|---|
| Brand: 品牌: | HONLIX 弘林科 |
| P/N: 料号 | HLK-309 |
| MOQ: 起订量 | 500PCS/Order 500条/次 |
| Place of Origin: 产地 | Kunshan City,China 中国昆山 |
| Delivery Time: 交货周期 | 1 week 1周 |
| Export Port: 发出港口 | Shanghai 上海 |
| General features: 一般特性: | |
| Product Name 产品名称 | M8 Series M8系列 |
| Product Spec 规格型号 | 6PIN Male 公 |
| Connector locking system 互锁 | N/A |
| Ingree of protection ratings 防护等级 | IP67 |
| Ambient temperature(operation) 耐温 | -25°C~+85°C |
| Customs tariff number 海关编码 | 854422100 |
| Environmental compliance 环保等级 | RoHs, Reach |
| Electrical parameters: 电气参数: | |
| Rated voltage 电压等级 | 48V |
| Rated current(25°C) 额定工作电流 | 2A |
| Withstand voltage 耐电压 | 500V |
| Contact resistance 接触电阻 | ≤10mΩ |
| Insulation resistance 绝缘电阻 | ≥20MΩ |
| Mechanical performance: 机械参数: | |
| Mechanical life 插拔寿命 | ≤200 mating cycles |
| Insertion force 插入力 | ≤20N |
| Pull out force 拔出力 | ≥3N |
| Insertion force 配线范围 | 0.14mm ² ~0.2mm ² |
| Application Area 应用领域: | |
| Signal control and transmission of electric bicycles, balance bikes and sooter 电动自行车, 电动滑板车, 电动平衡车的信号控制与传输 | |



HLK-310
[URL Download](#)

| | |
|---|---|
| Brand: 品牌: | HONLIX 弘林科 |
| P/N: 料号 | HLK-310 |
| MOQ: 起订量 | 500PCS/Order 500条/次 |
| Place of Origin: 产地 | Kunshan City,China 中国昆山 |
| Delivery Time: 交货周期 | 1 week 1周 |
| Export Port: 发出港口 | Shanghai 上海 |
| General features: 一般特性: | |
| Product Name 产品名称 | M8 Series M8系列 |
| Product Spec 规格型号 | 6PIN Female 母 |
| Connector locking system 互锁 | N/A |
| Ingree of protection ratings 防护等级 | IP67 |
| Ambient temperature(operation) 耐温 | -25°C~+85°C |
| Customs tariff number 海关编码 | 854422100 |
| Environmental compliance 环保等级 | RoHs, Reach |
| Electrical parameters: 电气参数: | |
| Rated voltage 电压等级 | 48V |
| Rated current(25°C) 额定工作电流 | 2A |
| Withstand voltage 耐电压 | 500V |
| Contact resistance 接触电阻 | ≤10mΩ |
| Insulation resistance 绝缘电阻 | ≥20MΩ |
| Mechanical performance: 机械参数: | |
| Mechanical life 插拔寿命 | ≤200 mating cycles |
| Insertion force 插入力 | ≤20N |
| Pull out force 拔出力 | ≥3N |
| Insertion force 配线范围 | 0.14mm ² ~0.2mm ² |
| Application Area 应用领域: | |
| Signal control and transmission of electric bicycles, balance bikes and sooter 电动自行车, 电动滑板车, 电动平衡车的信号控制与传输 | |



HLK-311
URL Download

| | |
|---|---|
| Brand: 品牌: | HONLIX 弘林科 |
| P/N: 料号 | HLK-311 |
| MOQ: 起订量 | 500PCS/Order 500条/次 |
| Place of Origin: 产地 | Kunshan City,China 中国昆山 |
| Delivery Time: 交货周期 | 1 week 1周 |
| Export Port: 发出港口 | Shanghai 上海 |
| General features: 一般特性: | |
| Product Name 产品名称 | M8 Series M8系列 |
| Product Spec 规格型号 | 7PIN Male 公 |
| Connector locking system 互锁 | N/A |
| Ingree of protection ratings 防护等级 | IP67 |
| Ambient temperature(operation) 耐温 | -25°C~+85°C |
| Customs tariff number 海关编码 | 854422100 |
| Environmental compliance 环保等级 | RoHs, Reach |
| Electrical parameters: 电气参数: | |
| Rated voltage 电压等级 | 48V |
| Rated current(25°C) 额定工作电流 | 2A |
| Withstand voltage 耐电压 | 500V |
| Contact resistance 接触电阻 | ≤10mΩ |
| Insulation resistance 绝缘电阻 | ≥20MΩ |
| Mechanical performance: 机械参数: | |
| Mechanical life 插拔寿命 | ≤200 mating cycles |
| Insertion force 插入力 | ≤20N |
| Pull out force 拔出力 | ≥3N |
| Insertion force 配线范围 | 0.14mm ² ~0.2mm ² |
| Application Area应用领域: | |
| Signal control and transmission of electric bicycles, balance bikes and sooter 电动自行车, 电动滑板车, 电动平衡车的信号控制与传输 | |



HLK-312
[URL Download](#)

| | |
|---|---|
| Brand: 品牌: | HONLIX 弘林科 |
| P/N: 料号 | HLK-312 |
| MOQ: 起订量 | 500PCS/Order 500条/次 |
| Place of Origin: 产地 | Kunshan City,China 中国昆山 |
| Delivery Time: 交货周期 | 1 week 1周 |
| Export Port: 发出港口 | Shanghai 上海 |
| General features: 一般特性: | |
| Product Name 产品名称 | M8 Series M8系列 |
| Product Spec 规格型号 | 7PIN Female 母 |
| Connector locking system 互锁 | N/A |
| Ingree of protection ratings 防护等级 | IP67 |
| Ambient temperature(operation) 耐温 | -25°C~+85°C |
| Customs tariff number 海关编码 | 854422100 |
| Environmental compliance 环保等级 | RoHs, Reach |
| Electrical parameters: 电气参数: | |
| Rated voltage 电压等级 | 48V |
| Rated current(25°C) 额定工作电流 | 2A |
| Withstand voltage 耐电压 | 500V |
| Contact resistance 接触电阻 | ≤10mΩ |
| Insulation resistance 绝缘电阻 | ≥20MΩ |
| Mechanical performance: 机械参数: | |
| Mechanical life 插拔寿命 | ≤200 mating cycles |
| Insertion force 插入力 | ≤20N |
| Pull out force 拔出力 | ≥3N |
| Insertion force 配线范围 | 0.14mm ² ~0.2mm ² |
| Application Area 应用领域: | |
| Signal control and transmission of electric bicycles, balance bikes and sooter 电动自行车, 电动滑板车, 电动平衡车的信号控制与传输 | |



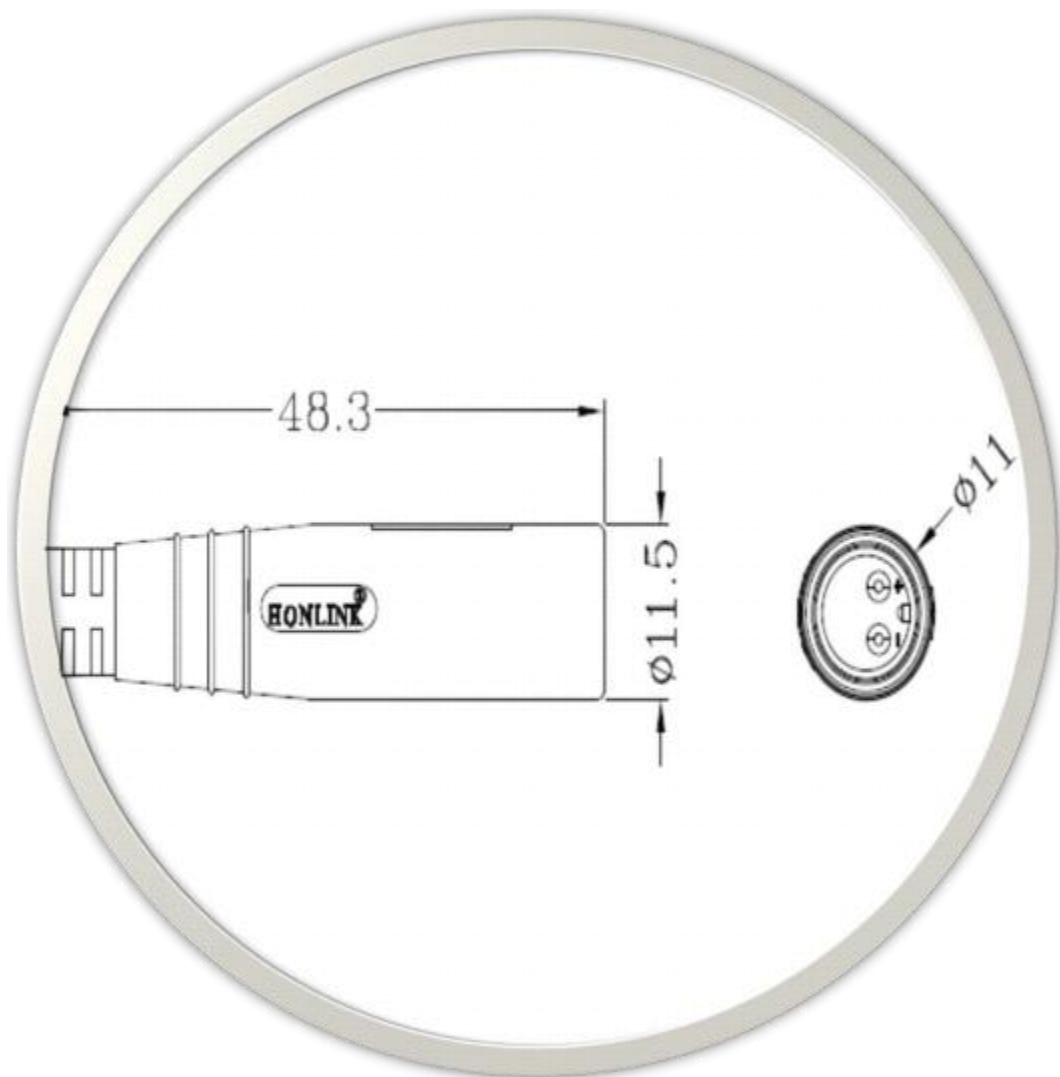
HLK-313
[URL Download](#)

| | |
|---|---|
| Brand: 品牌: | HONLIX 弘林科 |
| P/N: 料号 | HLK-312 |
| MOQ: 起订量 | 500PCS/Order 500条/次 |
| Place of Origin: 产地 | Kunshan City,China 中国昆山 |
| Delivery Time: 交货周期 | 1 week 1周 |
| Export Port: 发出港口 | Shanghai 上海 |
| General features: 一般特性: | |
| Product Name 产品名称 | M8 Series M8系列 |
| Product Spec 规格型号 | 8PIN Male 公 |
| Connector locking system 互锁 | N/A |
| Ingree of protection ratings 防护等级 | IP67 |
| Ambient temperature(operation) 耐温 | -25°C~+85°C |
| Customs tariff number 海关编码 | 854422100 |
| Environmental compliance 环保等级 | RoHs, Reach |
| Electrical parameters: 电气参数: | |
| Rated voltage 电压等级 | 48V |
| Rated current(25°C) 额定工作电流 | 2A |
| Withstand voltage 耐电压 | 500V |
| Contact resistance 接触电阻 | ≤10mΩ |
| Insulation resistance 绝缘电阻 | ≥20MΩ |
| Mechanical performance: 机械参数: | |
| Mechanical life 插拔寿命 | ≤200 mating cycles |
| Insertion force 插入力 | ≤20N |
| Pull out force 拔出力 | ≥3N |
| Insertion force 配线范围 | 0.14mm ² ~0.2mm ² |
| Application Area 应用领域: | |
| Signal control and transmission of electric bicycles, balance bikes and sooter 电动自行车, 电动滑板车, 电动平衡车的信号控制与传输 | |



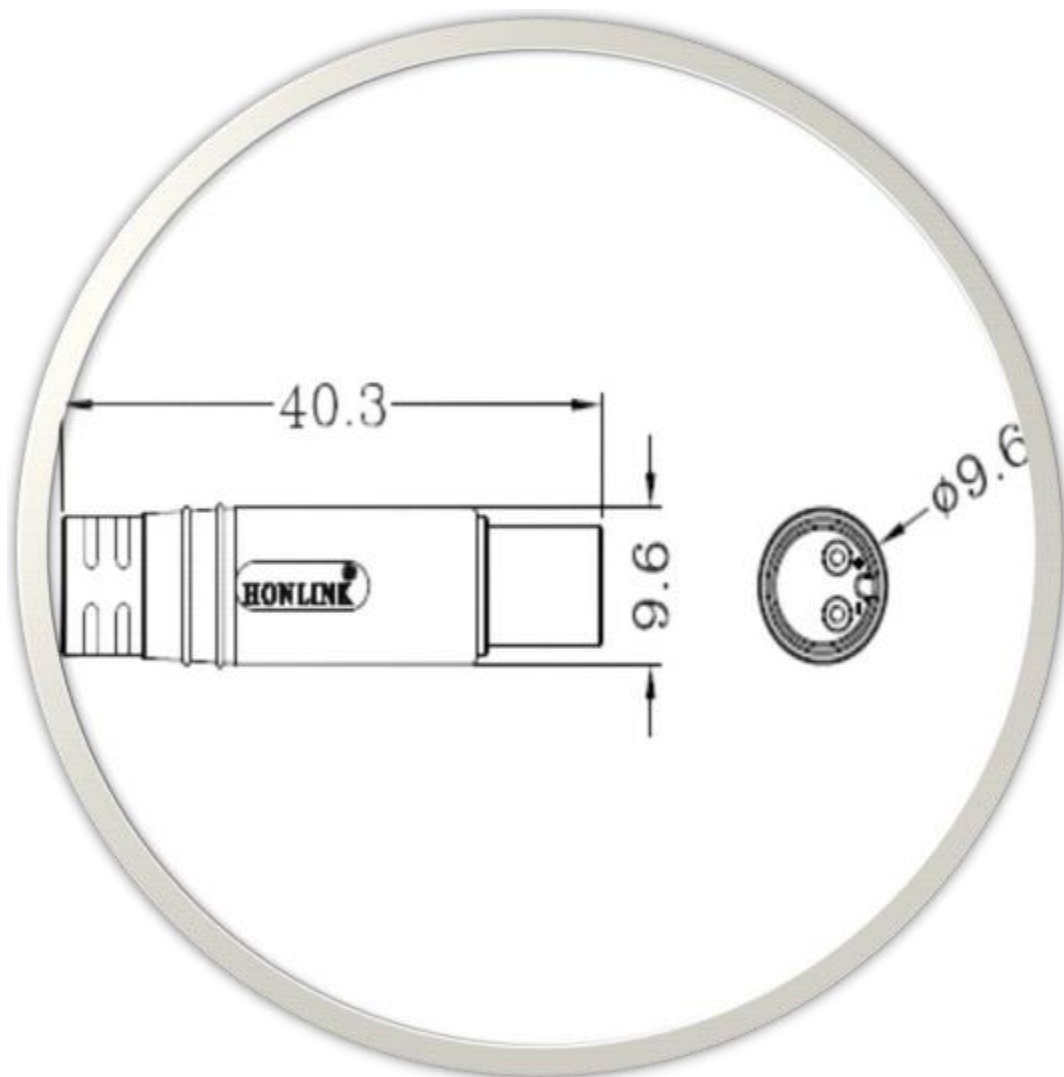
HLK-314
[URL Download](#)

| | |
|---|---|
| Brand: 品牌: | HONLIX 弘林科 |
| P/N: 料号 | HLK-314 |
| MOQ: 起订量 | 500PCS/Order 500条/次 |
| Place of Origin: 产地 | Kunshan City,China 中国昆山 |
| Delivery Time: 交货周期 | 1 week 1周 |
| Export Port: 发出港口 | Shanghai 上海 |
| General features: 一般特性: | |
| Product Name 产品名称 | M8 Series M8系列 |
| Product Spec 规格型号 | 8PIN Female 母 |
| Connector locking system 互锁 | N/A |
| Ingree of protection ratings 防护等级 | IP67 |
| Ambient temperature(operation) 耐温 | -25°C~+85°C |
| Customs tariff number 海关编码 | 854422100 |
| Environmental compliance 环保等级 | RoHs, Reach |
| Electrical parameters: 电气参数: | |
| Rated voltage 电压等级 | 48V |
| Rated current(25°C) 额定工作电流 | 2A |
| Withstand voltage 耐电压 | 500V |
| Contact resistance 接触电阻 | ≤10mΩ |
| Insulation resistance 绝缘电阻 | ≥20MΩ |
| Mechanical performance: 机械参数: | |
| Mechanical life 插拔寿命 | ≤200 mating cycles |
| Insertion force 插入力 | ≤20N |
| Pull out force 拔出力 | ≥3N |
| Insertion force 配线范围 | 0.14mm ² ~0.2mm ² |
| Application Area 应用领域: | |
| Signal control and transmission of electric bicycles, balance bikes and sooter 电动自行车, 电动滑板车, 电动平衡车的信号控制与传输 | |



HLK-315
URL Download

| | |
|--|---|
| Brand: 品牌: | HONLIX 弘林科 |
| P/N: 料号 | HLK-315 |
| MOQ: 起订量 | 500PCS/Order 500条/次 |
| Place of Origin: 产地 | Kunshan City,China 中国昆山 |
| Delivery Time: 交货周期 | 1 week 1周 |
| Export Port: 发出港口 | Shanghai 上海 |
| General features: 一般特性: | |
| Product Name 产品名称 | M8 Series M8系列 |
| Product Spec 规格型号 | 2PIN Male 公 |
| Connector locking system 互锁 | N/A |
| Ingree of protection ratings 防护等级 | IP67 |
| Ambient temperature(operation) 耐温 | -25°C~+85°C |
| Customs tariff number 海关编码 | 854422100 |
| Environmental compliance 环保等级 | RoHs, Reach |
| Electrical parameters: 电气参数: | |
| Rated voltage 电压等级 | 48V |
| Rated current(25°C) 额定工作电流 | 10A |
| Withstand voltage 耐电压 | 500V |
| Contact resistance 接触电阻 | ≤10mΩ |
| Insulation resistance 绝缘电阻 | ≥20MΩ |
| Mechanical performance: 机械参数: | |
| Mechanical life 插拔寿命 | ≤200 mating cycles |
| Insertion force 插入力 | ≤20N |
| Pull out force 拔出力 | ≥3N |
| Insertion force 配线范围 | 0.14mm ² ~0.2mm ² |
| Application Area应用领域: | |
| Power Signal control and transmission of electric bicycles, balance bikes and sooter 电动自行车, 电动滑板车, 电动平衡车的电源 & 信号控制与传输 | |



HLK-316
[URL Download](#)

| | |
|--|---|
| Brand: 品牌: | HONLIX 弘林科 |
| P/N: 料号 | HLK-316 |
| MOQ: 起订量 | 500PCS/Order 500条/次 |
| Place of Origin: 产地 | Kunshan City,China 中国昆山 |
| Delivery Time: 交货周期 | 1 week 1周 |
| Export Port: 发出港口 | Shanghai 上海 |
| General features: 一般特性: | |
| Product Name 产品名称 | M8 Series M8系列 |
| Product Spec 规格型号 | 2PIN Female 母 |
| Connector locking system 互锁 | N/A |
| Ingree of protection ratings 防护等级 | IP67 |
| Ambient temperature(operation) 耐温 | -25°C~+85°C |
| Customs tariff number 海关编码 | 854422100 |
| Environmental compliance 环保等级 | RoHs, Reach |
| Electrical parameters: 电气参数: | |
| Rated voltage 电压等级 | 48V |
| Rated current(25°C) 额定工作电流 | 10A |
| Withstand voltage 耐电压 | 500V |
| Contact resistance 接触电阻 | ≤10mΩ |
| Insulation resistance 绝缘电阻 | ≥20MΩ |
| Mechanical performance: 机械参数: | |
| Mechanical life 插拔寿命 | ≤200 mating cycles |
| Insertion force 插入力 | ≤20N |
| Pull out force 拔出力 | ≥3N |
| Insertion force 配线范围 | 0.14mm ² ~0.2mm ² |
| Application Area应用领域: | |
| Power Signal control and transmission of electric bicycles, balance bikes and sooter 电动自行车, 电动滑板车, 电动平衡车的电源&信号控制与传输 | |



HLK-317
URL Download

| | |
|--|-------------------------|
| Brand: 品牌: | HONLIX 弘林科 |
| P/N: 料号 | HLK-317 |
| MOQ: 起订量 | 500PCS/Order 500条/次 |
| Place of Origin: 产地 | Kunshan City,China 中国昆山 |
| Delivery Time: 交货周期 | 1 week 1周 |
| Export Port: 发出港口 | Shanghai 上海 |
| General features: 一般特性: | |
| Product Name 产品名称 | 3+6PIN Series |
| Product Spec 规格型号 | 3+6PIN Series 电机线 公 |
| Connector locking system 互锁 | N/A |
| Ingree of protection ratings 防护等级 | IP67 |
| Ambient temperature(operation) 耐温 | -25°C~+85°C |
| Customs tariff number 海关编码 | 854422100 |
| Environmental compliance 环保等级 | RoHs, Reach |
| Electrical parameters: 电气参数: | |
| Rated voltage 电压等级 | 60V |
| Rated current(25°C) 额定工作电流 | 15A |
| Withstand voltage 耐电压 | 700V |
| Contact resistance 接触电阻 | ≤10mΩ |
| Insulation resistance 绝缘电阻 | ≥20MΩ |
| Mechanical performance: 机械参数: | |
| Mechanical life 插拔寿命 | ≤200 mating cycles |
| Insertion force 插入力 | ≤20N |
| Pull out force 拔出力 | ≥3N |
| Insertion force 配线范围 | 0.2mm2~2.0mm2 |
| Application Area应用领域: | |
| Power Signal control and transmission of electric bicycles, balance bikes and sooter 电动自行车, 电动滑板车, 电动平衡车的电源&信号控制与传输 | |



HLK-318
URL Download

| | |
|---|-------------------------|
| Brand: 品牌: | HONLIX 弘林科 |
| P/N: 料号 | HLK-318 |
| MOQ: 起订量 | 500PCS/Order 500条/次 |
| Place of Origin: 产地 | Kunshan City,China 中国昆山 |
| Delivery Time: 交货周期 | 1 week 1周 |
| Export Port: 发出港口 | Shanghai 上海 |
| General features: 一般特性: | |
| Product Name 产品名称 | 3+6PIN Series |
| Product Spec 规格型号 | 3+6PIN Series 电机线 母 |
| Connector locking system 互锁 | N/A |
| Ingree of protection ratings 防护等级 | IP67 |
| Ambient temperature(operation) 耐温 | -25°C~+85°C |
| Customs tariff number 海关编码 | 854422100 |
| Environmental compliance 环保等级 | RoHs, Reach |
| Electrical parameters: 电气参数: | |
| Rated voltage 电压等级 | 60V |
| Rated current(25°C) 额定工作电流 | 15A |
| Withstand voltage 耐电压 | 700V |
| Contact resistance 接触电阻 | ≤10mΩ |
| Insulation resistance 绝缘电阻 | ≥20MΩ |
| Mechanical performance: 机械参数: | |
| Mechanical life 插拔寿命 | ≤200 mating cycles |
| Insertion force 插入力 | ≤20N |
| Pull out force 拔出力 | ≥3N |
| Insertion force 配线范围 | 0.2mm2~2.0mm2 |
| Application Area应用领域: | |
| Signal control and transmission of electric bicycles, balance bikes and sooter 电动自行车, 电动滑板车, 电动平衡车的信号控制与传输 | |



HLK-319

[URL Download](#)

| | |
|---|--|
| Brand: 品牌: | HONLIX 弘林科 |
| P/N: 料号 | HLK-319 |
| MOQ: 起订量 | 500PCS/Order 500条/次 |
| Place of Origin: 产地 | Kunshan City,China 中国昆山 |
| Delivery Time: 交货周期 | 1 week 1周 |
| Export Port: 发出港口 | Shanghai 上海 |
| General features: 一般特性: | |
| Product Name 产品名称 | Flat waterproof splitter 一拖四分流器 |
| Product Spec 规格型号 | 1 to 4分流器 |
| Connector locking system 互锁 | N/A |
| Ingree of protection ratings 防护等级 | IP67 |
| Ambient temperature(operation) 耐温 | -25°C~+85°C |
| Customs tariff number 海关编码 | 854422100 |
| Environmental compliance 环保等级 | RoHs, Reach |
| Electrical parameters: 电气参数: | |
| Rated voltage 电压等级 | 60V |
| Rated current(25°C) 额定工作电流 | N/A |
| Withstand voltage 耐电压 | 700V |
| Contact resistance 接触电阻 | ≤10mΩ |
| Insulation resistance 绝缘电阻 | ≥20MΩ |
| Mechanical performance: 机械参数: | |
| Mechanical life 插拔寿命 | N/A |
| Insertion force 插入力 | N/A |
| Pull out force 拔出力 | N/A |
| Insertion force 配线范围 | 0.2mm ² ~2.0mm ² |
| Application Area应用领域: | |
| PowerSignal control and transmission of electric bicycles, balance bikes and sooter 电动自行车, 电动滑板车, 电动平衡车的电源&信号控制与传输 | |



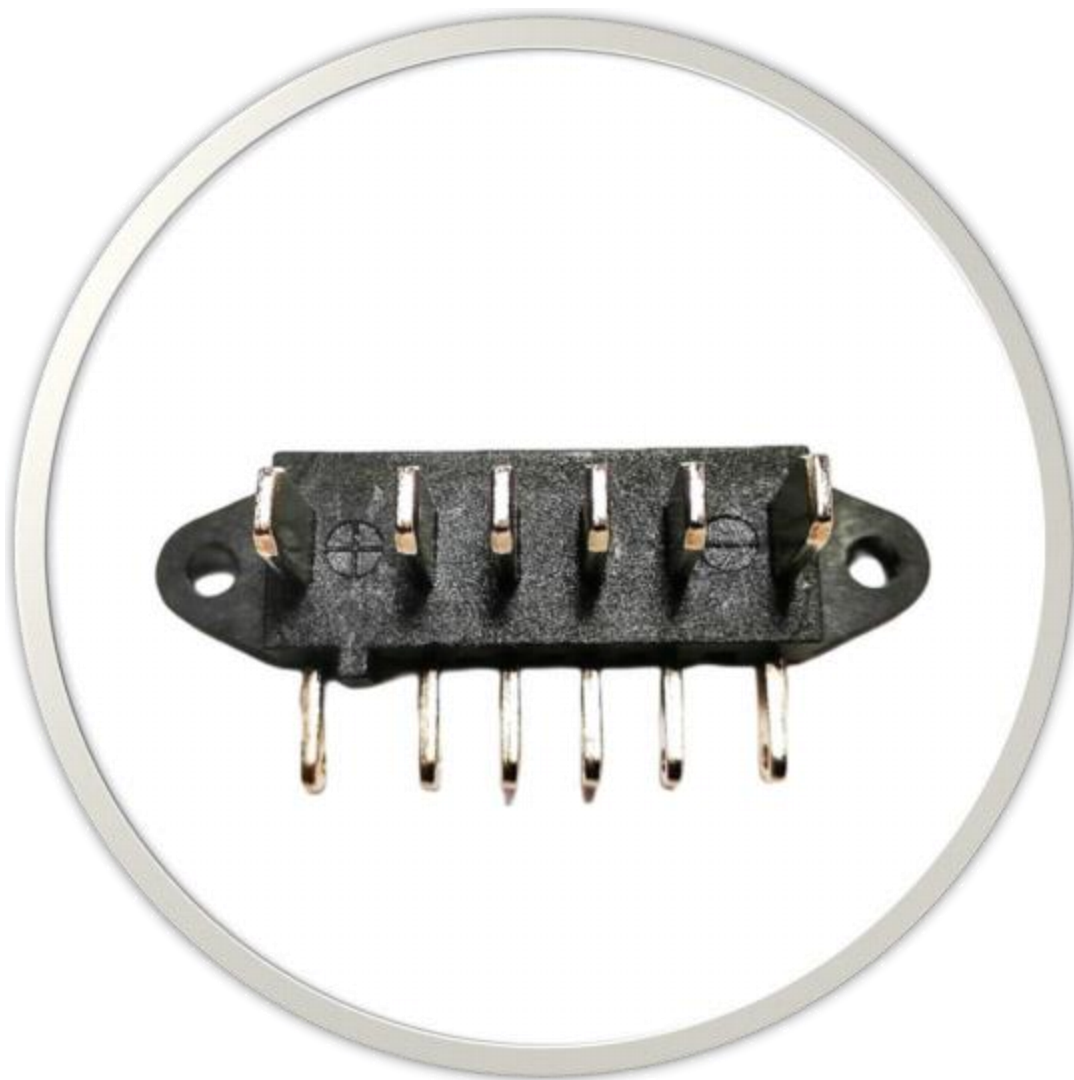
HLK-320
URL Download

| | |
|---|--|
| Brand: 品牌: | HONLIX 弘林科 |
| P/N: 料号 | HLK-320 |
| MOQ: 起订量 | 500PCS/Order 500条/次 |
| Place of Origin: 产地 | Kunshan City,China 中国昆山 |
| Delivery Time: 交货周期 | 1 week 1周 |
| Export Port: 发出港口 | Shanghai 上海 |
| General features: 一般特性: | |
| Product Name 产品名称 | DC Charging |
| Product Spec 规格型号 | DC 5521 Male |
| Connector locking system 互锁 | N/A |
| Ingree of protection ratings 防护等级 | IP67 |
| Ambient temperature(operation) 耐温 | -25°C~+85°C |
| Customs tariff number 海关编码 | 854422100 |
| Environmental compliance 环保等级 | RoHs, Reach |
| Electrical parameters: 电气参数: | |
| Rated voltage 电压等级 | 60V |
| Rated current(25°C) 额定工作电流 | 15A |
| Withstand voltage 耐电压 | 700V |
| Contact resistance 接触电阻 | ≤10mΩ |
| Insulation resistance 绝缘电阻 | ≥20MΩ |
| Mechanical performance: 机械参数: | |
| Mechanical life 插拔寿命 | ≤5000 mating cycles |
| Insertion force 插入力 | ≤20N |
| Pull out force 拔出力 | ≥3N |
| Insertion force 配线范围 | 0.2mm ² ~1.5mm ² |
| Application Area应用领域: | |
| PowerSignal control and transmission of electric bicycles, balance bikes and sooter 电动自行车, 电动滑板车, 电动平衡车的电源&信号控制与传输 | |



HLK-321
[URL Download](#)

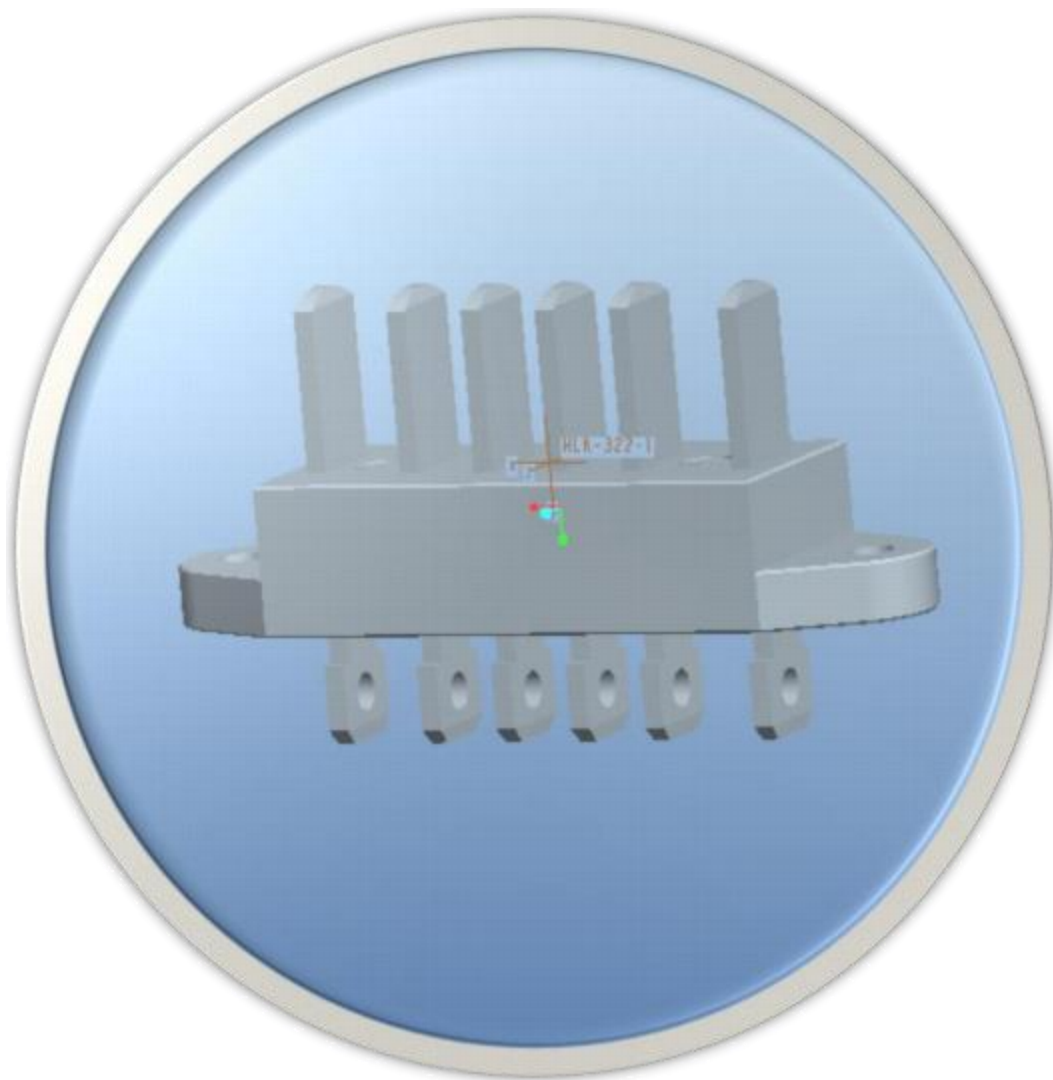
| | |
|---|--|
| Brand: 品牌: | HONLIX 弘林科 |
| P/N: 料号 | HLK-321 |
| MOQ: 起订量 | 500PCS/Order 500条/次 |
| Place of Origin: 产地 | Kunshan City,China 中国昆山 |
| Delivery Time: 交货周期 | 1 week 1周 |
| Export Port: 发出港口 | Shanghai 上海 |
| General features: 一般特性: | |
| Product Name 产品名称 | DC Charging |
| Product Spec 规格型号 | DC 5521 Female |
| Connector locking system 互锁 | N/A |
| Ingree of protection ratings 防护等级 | IP67 |
| Ambient temperature(operation) 耐温 | -25°C~+85°C |
| Customs tariff number 海关编码 | 854422100 |
| Environmental compliance 环保等级 | RoHs, Reach |
| Electrical parameters: 电气参数: | |
| Rated voltage 电压等级 | 60V |
| Rated current(25°C) 额定工作电流 | 15A |
| Withstand voltage 耐电压 | 700V |
| Contact resistance 接触电阻 | ≤10mΩ |
| Insulation resistance 绝缘电阻 | ≥20MΩ |
| Mechanical performance: 机械参数: | |
| Mechanical life 插拔寿命 | ≤5000 mating cycles |
| Insertion force 插入力 | ≤20N |
| Pull out force 拔出力 | ≥3N |
| Insertion force 配线范围 | 0.2mm ² ~1.5mm ² |
| Application Area应用领域: | |
| PowerSignal control and transmission of electric bicycles, balance bikes and sooter 电动自行车, 电动滑板车, 电动平衡车的电源&信号控制与传输 | |



HLK-322

[URL Download](#)

| | |
|---|--|
| Brand: 品牌: | HONLIX 弘林科 |
| P/N: 料号 | HLK-322 |
| MOQ: 起订量 | 500PCS/Order 500条/次 |
| Place of Origin: 产地 | Kunshan City,China 中国昆山 |
| Delivery Time: 交货周期 | 1 week 1周 |
| Export Port: 发出港口 | Shanghai 上海 |
| General features: 一般特性: | |
| Product Name 产品名称 | 25A 6PIN Male 底插连接器 |
| Product Spec 规格型号 | 25A 6PIN Male 底插连接器 |
| Connector locking system 互锁 | N/A |
| Ingree of protection ratings 防护等级 | IP67 |
| Ambient temperature(operation) 耐温 | -25°C~+85°C |
| Customs tariff number 海关编码 | 854422100 |
| Environmental compliance 环保等级 | RoHs, Reach |
| Mechanical performance: 机械参数: | |
| Rated voltage 电压等级 | 60V |
| Rated current(25°C) 额定工作电流 | 25A |
| Withstand voltage 耐电压 | 700V |
| Contact resistance 接触电阻 | ≤10mΩ |
| Insulation resistance 绝缘电阻 | ≥20MΩ |
| Mechanical performance: 机械参数: | |
| Mechanical life 插拔寿命 | ≤3000 mating cycles |
| Insertion force 插入力 | ≤20N |
| Pull out force 拔出力 | ≥3N |
| Insertion force 配线范围 | 0.5mm ² ~6.0mm ² |
| Application Area应用领域: | |
| PowerSignal control and transmission of electric bicycles, balance bikes and sooter 电动自行车, 电动滑板车, 电动平衡车的电源&信号控制与传输 | |



HLK-322-1
URL Download

| | |
|---|--|
| Brand: 品牌: | HONLIX 弘林科 |
| P/N: 料号 | HLK-322-1直插 |
| MOQ: 起订量 | 500PCS/Order 500条/次 |
| Place of Origin: 产地 | Kunshan City,China 中国昆山 |
| Delivery Time: 交货周期 | 1 week 1周 |
| Export Port: 发出港口 | Shanghai 上海 |
| General features: 一般特性: | |
| Product Name 产品名称 | 25A 6PIN Male 底插连接器 |
| Product Spec 规格型号 | 25A 6PIN Male 底插连接器 |
| Connector locking system 互锁 | N/A |
| Ingree of protection ratings 防护等级 | IP67 |
| Ambient temperature(operation) 耐温 | -25°C~+85°C |
| Customs tariff number 海关编码 | 854422100 |
| Environmental compliance 环保等级 | RoHs, Reach |
| Electrical parameters: 电气参数: | |
| Rated voltage 电压等级 | 60V |
| Rated current(25°C) 额定工作电流 | 25A |
| Withstand voltage 耐电压 | 700V |
| Contact resistance 接触电阻 | ≤10mΩ |
| Insulation resistance 绝缘电阻 | ≥20MΩ |
| Mechanical performance: 机械参数: | |
| Mechanical life 插拔寿命 | ≤3000 mating cycles |
| Insertion force 插入力 | ≤20N |
| Pull out force 拔出力 | ≥3N |
| Insertion force 配线范围 | 0.5mm ² ~6.0mm ² |
| Application Area应用领域: | |
| PowerSignal control and transmission of electric bicycles, balance bikes and sooter 电动自行车, 电动滑板车, 电动平衡车的电源&信号控制与传输 | |



HLK-323
[URL Download](#)

| | |
|---|--|
| Brand: 品牌: | HONLIX 弘林科 |
| P/N: 料号 | HLK-323 |
| MOQ: 起订量 | 500PCS/Order 500条/次 |
| Place of Origin: 产地 | Kunshan City,China 中国昆山 |
| Delivery Time: 交货周期 | 1 week 1周 |
| Export Port: 发出港口 | Shanghai 上海 |
| General features: 一般特性: | |
| Product Name 产品名称 | 25A 6PIN Female 底插连接器 |
| Product Spec 规格型号 | 25A 6PIN Female 底插连接器 |
| Connector locking system 互锁 | N/A |
| Ingree of protection ratings 防护等级 | IP67 |
| Ambient temperature(operation) 耐温 | -25°C~+85°C |
| Customs tariff number 海关编码 | 854422100 |
| Environmental compliance 环保等级 | RoHs, Reach |
| Electrical parameters: 电气参数: | |
| Rated voltage 电压等级 | 60V |
| Rated current(25°C) 额定工作电流 | 25A |
| Withstand voltage 耐电压 | 700V |
| Contact resistance 接触电阻 | ≤10mΩ |
| Insulation resistance 绝缘电阻 | ≥20MΩ |
| Mechanical performance: 机械参数: | |
| Mechanical life 插拔寿命 | ≤3000 mating cycles |
| Insertion force 插入力 | ≤20N |
| Pull out force 拔出力 | ≥3N |
| Insertion force 配线范围 | 0.5mm ² ~6.0mm ² |
| Application Area应用领域: | |
| PowerSignal control and transmission of electric bicycles, balance bikes and sooter 电动自行车, 电动滑板车, 电动平衡车的电源&信号控制与传输 | |



HLK-324

Customize for BOSCH

博世定制

| | |
|---|--------------------------------|
| Brand: 品牌: | HONLIX 弘林科 |
| P/N: 料号 | HLK-324 |
| MOQ: 起订量 | 500PCS/Order 500条/次 |
| Place of Origin: 产地 | Kunshan City,China 中国昆山 |
| Delivery Time: 交货周期 | 1 week 1周 |
| Export Port: 发出港口 | Shanghai 上海 |
| General features: 一般特性: | |
| Product Name 产品名称 | 16A charging for BOSCH 博世充电连接器 |
| Product Spec 规格型号 | 16A 3PIN for BOSCH |
| Connector locking system 互锁 | N/A |
| Ingree of protection ratings 防护等级 | IP67 |
| Ambient temperature(operation) 耐温 | -25°C~+85°C |
| Customs tariff number 海关编码 | 854422100 |
| Environmental compliance 环保等级 | RoHs, Reach |
| Electrical parameters: 电气参数: | |
| Rated voltage 电压等级 | 72V |
| Rated current(25°C) 额定工作电流 | 16A |
| Withstand voltage 耐电压 | 500V |
| Contact resistance 接触电阻 | ≤10mΩ |
| Insulation resistance 绝缘电阻 | ≥20MΩ |
| Mechanical performance: 机械参数: | |
| Mechanical life 插拔寿命 | ≤3000 mating cycles |
| Insertion force 插入力 | ≤20N |
| Pull out force 拔出力 | ≥3N |
| Insertion force 配线范围 | 1.5m ² |
| Application Area应用领域: | |
| PowerSignal control and transmission of electric bicycles, balance bikes and sooter 电动自行车, 电动滑板车, 电动平衡车的电源&信号控制与传输 | |



HLK-325
Customize for ZZ
智租定制

| | |
|---|-------------------------|
| Brand: 品牌: | HONLIX 弘林科 |
| P/N: 料号 | HLK-325 |
| MOQ: 起订量 | 500PCS/Order 500条/次 |
| Place of Origin: 产地 | Kunshan City,China 中国昆山 |
| Delivery Time: 交货周期 | 1 week 1周 |
| Export Port: 发出港口 | Shanghai 上海 |
| General features: 一般特性: | |
| Product Name 产品名称 | 10A 2+3PIN 底插连接器 |
| Product Spec 规格型号 | 10A 2+3PIN 底插连接器 |
| Connector locking system 互锁 | N/A |
| Ingree of protection ratings 防护等级 | IP67 |
| Ambient temperature(operation) 耐温 | -25°C~+85°C |
| Customs tariff number 海关编码 | 854422100 |
| Environmental compliance 环保等级 | RoHs, Reach |
| Electrical parameters: 电气参数: | |
| Rated voltage 电压等级 | 72V |
| Rated current(25°C) 额定工作电流 | 10A |
| Withstand voltage 耐电压 | 500V |
| Contact resistance 接触电阻 | ≤10mΩ |
| Insulation resistance 绝缘电阻 | ≥20MΩ |
| Mechanical performance: 机械参数: | |
| Mechanical life 插拔寿命 | ≤3000 mating cycles |
| Insertion force 插入力 | ≤20N |
| Pull out force 拔出力 | ≥3N |
| Insertion force 配线范围 | 1.5m ² |
| Application Area应用领域: | |
| PowerSignal control and transmission of electric bicycles, balance bikes and sooter 电动自行车, 电动滑板车, 电动平衡车的电源&信号控制与传输 | |



HLK-326
URL Download

| | |
|---|---------------------------------------|
| Brand: 品牌: | HONLIX 弘林科 |
| P/N: 料号 | HLK-326 |
| MOQ: 起订量 | 500PCS/Order 500条/次 |
| Place of Origin: 产地 | Kunshan City,China 中国昆山 |
| Delivery Time: 交货周期 | 1 week 1周 |
| Export Port: 发出港口 | Shanghai 上海 |
| General features: 一般特性: | |
| Product Name 产品名称 | M8 Power 15A &Signal 2A 2+2PIN |
| Product Spec 规格型号 | M8 2PIN Power 15A+Signal 2PIN连接器 Male |
| Connector locking system 互锁 | N/A |
| Ingree of protection ratings 防护等级 | IP67 |
| Ambient temperature(operation) 耐温 | -25°C~+85°C |
| Customs tariff number 海关编码 | 854422100 |
| Environmental compliance 环保等级 | RoHs, Reach |
| Electrical parameters: 电气参数: | |
| Rated voltage 电压等级 | 72V |
| Rated current(25°C) 额定工作电流 | Power 15A &Signal 2A 2+2PIN |
| Withstand voltage 耐电压 | 500V |
| Contact resistance 接触电阻 | ≤10mΩ |
| Insulation resistance 绝缘电阻 | ≥20MΩ |
| Mechanical performance: 机械参数: | |
| Mechanical life 插拔寿命 | ≤3000 mating cycles |
| Insertion force 插入力 | ≤20N |
| Pull out force 拔出力 | ≥3N |
| Insertion force 配线范围 | 1.5m ² |
| Application Area应用领域: | |
| PowerSignal control and transmission of electric bicycles, balance bikes and sooter 电动自行车, 电动滑板车, 电动平衡车的电源&信号控制与传输 | |



HLK-327

[URL Download](#)

| | |
|---|--|
| Brand: 品牌: | HONLIX 弘林科 |
| P/N: 料号 | HLK-327 |
| MOQ: 起订量 | 500PCS/Order 500条/次 |
| Place of Origin: 产地 | Kunshan City,China 中国昆山 |
| Delivery Time: 交货周期 | 1 week 1周 |
| Export Port: 发出港口 | Shanghai 上海 |
| General features: 一般特性: | |
| Product Name 产品名称 | M8 Power 15A &Signal 2A 2+2PIN |
| Product Spec 规格型号 | M8 2 PIN Power 15A + Signal 2 PIN 连接器 Female |
| Connector locking system 互锁 | N/A |
| Ingree of protection ratings 防护等级 | IP67 |
| Ambient temperature(operation) 耐温 | -25°C~+85°C |
| Customs tariff number 海关编码 | 854422100 |
| Environmental compliance 环保等级 | RoHs, Reach |
| Electrical parameters: 电气参数: | |
| Rated voltage 电压等级 | 72V |
| Rated current(25°C) 额定工作电流 | Power 15A &Signal 2A 2+2PIN |
| Withstand voltage 耐电压 | 500V |
| Contact resistance 接触电阻 | ≤10mΩ |
| Insulation resistance 绝缘电阻 | ≥20MΩ |
| Mechanical performance: 机械参数: | |
| Mechanical life 插拔寿命 | ≤3000 mating cycles |
| Insertion force 插入力 | ≤20N |
| Pull out force 拔出力 | ≥3N |
| Insertion force 配线范围 | 1.5m ² |
| Application Area 应用领域: | |
| PowerSignal control and transmission of electric bicycles, balance bikes and sooter 电动自行车, 电动滑板车, 电动平衡车的电源&信号控制与传输 | |

HONLIX

Thanks!

www.honlix.com